

Repair & Rejacketing



Wraparound Jacket Repair Sleeve

MBSM repair sleeves protect cables in mechanically abusive environments, re-jacket premolded splices, repair and re-jacket LC-shielded and moisture-impervious cables and provide strain relief.

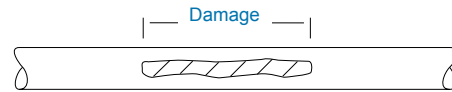
Available in five diameters with 5:1 shrink ratios.

For use on standard poly- or elastomeric-insulated/jacketed cables, which may include aluminum or steel armoring. Provides a moisture-vapor-transmission (MVT) barrier for repairing and re-jacketing LC-shield and moisture impervious cables. *MBSM sleeves do not provide electrical insulation.*

Selection Information: dimensions in inches (millimeters)

Catalog Number	Cable Use Range (Min.–Max.)	Sleeve Length*	Std. Pack (Kits/Box)
MBSM-43/8-1200	0.35-1.50 (9-38)	48 (1219)	6
MBSM-75/15-1200	0.65-2.65 (17-67)	48 (1219)	6
MBSM-125/30-1200	1.30-4.30 (33-109)	48 (1219)	6
MBSM-160/42-1200	1.80-5.70 (46-145)	48 (1219)	6
MBSM-200/50-1200	2.15-7.10 (55-180)	48 (1219)	6

Damage	Total Seal Length
<3 (<76)	3 (76)
3-12 (76-305)	4 (102)
12-24 (305-610)	6 (152)
>24 (>610)	8 (203)



Cut Sleeve Length = Damage Length + Total Seal Length

Ordering Information

1. Select appropriate catalog number based on the cable use range.
2. Kits contain a wraparound sleeve, stainless steel channel closure, and redundant sealant strips.
- *3. Sleeve may be field-cut for shorter requirements.
4. Length tolerance is ± 2%.
5. Related test report: [EDR-5225](#)